



SOUTH SEAS ISLAND RESORT



LUXURY RESORTS
& HOTELS



WELCOMING GUESTS WITH A FRESH FACE AND NEW NAME

Experience the blissful seclusion, beauty and enchantment of an island getaway in a remarkably accessible setting at South Seas Island Resort. Nestled on more than 330 acres along the Gulf of Mexico, this legendary Captiva beach resort welcomes you with a laid-back atmosphere and beautifully-restored accommodations.

Refresh your spirit with a round of seaside golf. Indulge in world-renowned sailing and adventurous fishing. Venture out to explore the barrier islands. No matter how you wish to spend the day, this beloved resort invites you to experience the essence of Southwest Florida.

WORLD CALIBER SEASIDE GOLF • MILES OF PRISTINE PRIVATE BEACHES
COMPLETELY REFURBISHED ACCOMMODATIONS • DINING VARIETY



ACCOMMODATIONS

Guests enjoy a selection of 465 newly enhanced accommodations ranging from guest rooms with water views, to one-, two- or three-bedroom villas and private homes. Comfortable, quiet and luxurious, units feature spectacular beach, bay, marina, tennis center or golf course views, and an intimate, secluded ambiance in harmony with Florida's natural surroundings.

ACCOMMODATION FEATURES

- Private balconies
- Living room with sleeper sofa
- VCR or DVD player
- Fully-equipped kitchen with separate dining area, or mini-refrigerator and microwave
- In-room safe, coffee maker with coffee/tea, ironing set and hair dryer

RESORT AMENITIES & RECREATION

- 2 1/2 mile-long expanse of shell-strewn Southwest Florida beach
- New gulf front, Executive Golf Course, redesigned as one of the Top Five Short Courses in the world
- Swimming pool and jetted spa
- On-site rental of bicycles, catamarans and sea kayaks
- Colgate's Offshore Sailing School, the number one ranked sailing school in the U.S.
- Tennis courts with on-staff tennis professionals available for private lessons, group clinics and tournaments, organized tennis mixed doubles, partner matching and daily instruction
- Yacht harbour with 2,100 feet of alongside berthing
- Award-winning recreation professionals that have organized family activities like fishing expeditions, log rolling contests, family bingo, alligator races and hydrocycle tours
- New Kid's Camp
- Lagoon style pool located on north end, with 13 additional pools throughout the Resort

GUEST SERVICES

- Newspaper delivery
- Grocery and Deli/sundry stores
- Business center
- Trolley service

DINING & ENTERTAINMENT

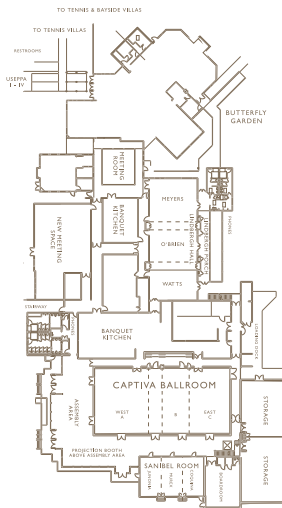
A variety of newly redesigned dining options are offered at South Seas, ranging from fresh seafood served in a casual dockside setting, to open air bistro dining with panoramic views of the water; to elegant cuisine, prime steaks and fine wines. Highlights include:

- The Pointe, newly opened, features a Tommy Bahama look and Caribbean Grille menu
- Scoops & Slices with friendly table and counter service, offering old fashioned ice cream, candy and coal fired pizza

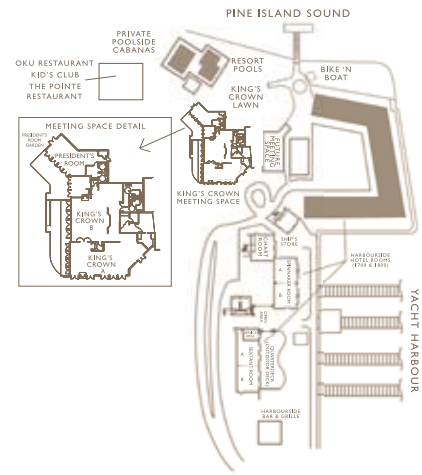
MEETINGS & EVENTS

South Seas Island Resort is the ideal site for memorable meetings, conferences and incentives. Enjoy customized attention from professional meeting coordinators, recreation staff members and outstanding caterers. From themed parties to group excursions, your individual needs will be anticipated and exceeded.

- More than 16,500 square feet of flexible meeting space, accommodating groups from 10 to 300
- Onsite entertainment company
- Group activities
- Full-service professional conference planning department offering catering, audio/visual equipment and set up



SOUTH END



NORTH END

	Room Name	Dimensions	Ceiling Ht.	Sq. Ft.	Theater	Classroom	Banquet	Reception	Conference	U-Shape
SOUTH END	Captiva Ballroom	100 x 50	16'	5,000'	500	380	400	500	N/A	96
	West Ballroom	50 x 50	16'	2,500'	250	160	200	200	50	55
	East Ballroom	50 x 51	16'	2,500'	250	160	200	200	50	55
	Salon A	50 x 40	16'	2,000'	200	140	120	180	40	48
	Salon B	50 x 30	16'	1,500'	150	80	70	170	30	42
	Salon C	50 x 31	16'	1,500'	150	80	70	170	30	42
	Ballroom Foyer	70 x 50	11'	3,500'	N/A	N/A	N/A	450	N/A	N/A
	Sanibel Room	48 x 30	11'	1,440'	150	70	110	100	31	46
	Junonia	16 x 30	11'	480'	40	25	30	40	12	24
	Murex	16 x 31	11'	480'	40	25	30	40	12	24
	Coquina	16 x 32	11'	480'	40	25	30	40	12	24
	Lindbergh Hall	90 x 35	10'	3,150'	225	190	230	270	N/A	N/A
	Meyer	35 x 35	10'	1,225'	100	75	70	115	25	25
	O'Brien	30 x 35	10'	1,050'	75	70	60	90	22	22
	Watts	25 x 35	10'	875'	50	45	40	70	17	17
	Lindbergh Porch	50 x 30	14'	1,500'	N/A	N/A	N/A	100	N/A	N/A
	Executive Boardroom	30 x 26	14'	780'	65	34	50	70	N/A	28
	Useppa Room (I,II,III)	57 x 34	8'	1,938'	120	90	120	150	N/A	78
	Useppa I	19 x 34	8'	646'	40	30	40	50	N/A	26
	Useppa II	19 x 34	8'	646'	40	30	40	50	N/A	26
	Useppa III	19 x 34	8'	646'	40	30	40	50	N/A	26
Useppa IV (Stand alone)	19 x 34	8'	646'	40	30	40	50	N/A	26	
Bayside Pool	N/A	N/A	2,300'	N/A	N/A	180	200	N/A	N/A	
Tennis Deck	36 x 40	N/A	1,440'	N/A	N/A	100	150	N/A	N/A	
Chadwicks Plaza	50 x 60	N/A	3,000v	N/A	N/A	140	340	N/A	N/A	
New Meeting Space (to be named)	50 x 40	10'	2,000'	200	140	120	180	N/A	48	
Meeting Room (to be named)	30 x 35	10'	1,050'	75	70	60	90	N/A	22	
NORTH END	Sextant	66 x 24	10'	1,584'	150	96	110	175	32	60
	Sextant A	33 x 24	10'	792'	70	36	50	90	16	31
	Sextant B	33 x 25	10'	792'	70	36	50	90	16	31
	Spinnaker	66 x 24	10'	1,584'	150	96	110	175	32	60
	Spinnaker A	33 x 24	10'	792'	70	36	50	90	16	31
	Spinnaker B	33 x 25	10'	792'	70	36	50	90	16	31
	Chart Room	33 x 24	10'	792'	70	36	50	90	16	30
	President's Room	20 x 34	10'	700'	54	35	40	60	N/A	30
	President's Room Patio	18 x 34	8'	612'	N/A	N/A	40	60	N/A	N/A
	King's Crown Lawn	N/A	N/A	8,000'	N/A	N/A	480	600	N/A	N/A
	King's Crown	N/A	10'	2,839'	N/A	N/A	210	250	N/A	N/A
King's Crown A	47 x 26	10'	1,196'	75	55	80	125	N/A	40	
King's Crown B	N/A	10'	1,643'	80	60	130	150	N/A	30	

All information subject to change



SOUTH SEAS ISLAND RESORT

5400 PLANTATION ROAD, CAPTIVA ISLAND, FL 33924

T. 239.432.6743 F. 239.482.2470

SOUTHSEAS.COM LUXURYRESORTS.COM

GDS BOOKING CODES

LXR CHAIN CODE **XO**

AMADEUS **FMY871**

WORLDSPAN **SSPLA**

GALILEO **77403**

SABRE **23951**